

A large graphic consisting of a yellow circle inside a white circle, which is itself inside a larger yellow circle, all centered at the top of the page.

SOLENT
UNIVERSITY

SOUTHAMPTON

GET READY TO

MASTER

YOUR FUTURE

With a postgraduate qualification at Solent University

A large graphic consisting of a white semi-circle above a red semi-circle, both centered at the bottom of the page.

www.solent.ac.uk/postgrad

WELCOME

Here at Solent University, we offer a variety of postgraduate courses; whether you wish to specialise in a subject area, learn something new or change your career path. Our MA, MSc, MBA and MRes courses are all designed to enhance your career prospects and are delivered within a supportive learning environment.

The UK Commission for Employment and Skills predicts that roughly **15 PER CENT** of jobs (one in seven) are likely to need a postgraduate degree by 2022.

WHAT IS POSTGRADUATE STUDY?

Postgraduate degrees are the next level up from an undergraduate degree where you'll study a subject more deeply and at a higher level. You can choose to study in the same subject area as your undergraduate degree, or if the entry requirements allow, learn something new that could complement your existing knowledge. You can also undertake a postgraduate degree at Solent if you have relevant work experience instead of an undergraduate degree. If you enjoy research, you may want to consider progressing onto a research degree such as a PhD or MPhil.

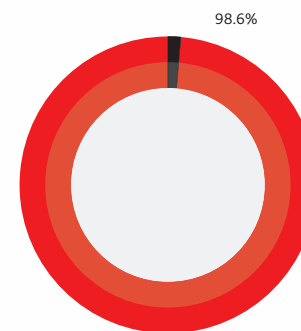
As postgraduate study is at a higher level, you will be expected to develop your research and analytical skills. Our staff and resources are available to support you through your study requirements and help you succeed. However, you will need dedication and passion for your subject to keep you motivated through independent study.

BENEFITS OF POSTGRADUATE STUDY

A postgraduate degree is more than a qualification. Solent alumni have said that they've acquired a higher level of confidence in their presentations and decision-making, developed a professional mind-set in how they approach problems and execute solutions, built an industry network through their peers, lecturers and guest speakers, as well as benefiting from the opportunities that a thriving city such as Southampton offers.

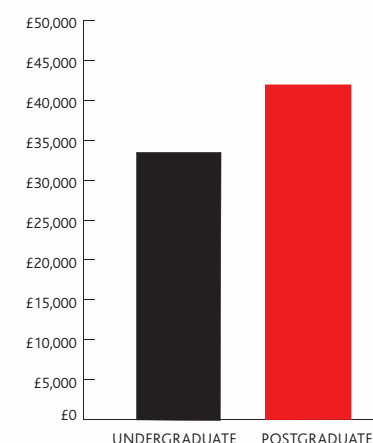
By developing the skills you've learnt during your undergraduate studies or in the workplace, we hope that you'll believe you can achieve anything and enhance your career prospects.

Postgraduate leavers in employment in professional or managerial roles six months after graduating *



*DLHE 2018

MEDIAN SALARY **



**Graduate Labour Market Survey 2019

WHY SOLENT?

There are many reasons to consider studying a postgraduate qualification at Solent, here are our top five:

1. INDUSTRY LINKS

We maintain excellent links with industry, and our courses are designed in close consultation with these contacts, meaning they include the relevant knowledge and skills required by industry. Courses regularly offer guest lectures, company visits and networking events, as well as live client briefs where you'll be set a task by a working professional and then pitch your idea to them.

2. FACILITIES

Throughout your studies you will have access to our range of high-specification facilities, using equipment that is modern and up to date – helping you develop the essential practical skills employers are looking for.

3. SUPPORT

As a postgraduate student at Solent you will have access to a wide range of support throughout your studies and beyond. Whether you are having financial difficulty, struggling with your mental health or need additional help with academic skills, you'll find that help is always on hand. In addition, our library offers a dedicated librarian, digital resources, bookable private study rooms and an enhanced inter-library loans service, all just for postgrads. It's also open 24/7 during peak periods.

4. ACADEMIC STAFF

Our highly experienced academics come from a range of backgrounds, bringing professional expertise and experience into their teaching. Many are also active in research, and have had papers published in academic journals, books or industry publications.

5. CAREERS

Our dedicated careers service, Solent Futures, offers advice and support in finding your dream job. Services include one-to-one consultations, careers fairs, workshops such as CV writing, interview techniques, optimising LinkedIn and applying for jobs. The team also advertise graduate jobs and offer careers advice for life.



ALUMNI INSIGHT

Some of our postgraduate alumni discuss their thoughts on their study experience and share some tips for you.

Daniel Moore, a Solent alumnus from MSc Applied Acoustics, shares what it's like to progress from an undergraduate to a postgraduate degree:

“The level of detail is much greater than what was expected at undergraduate level. At this stage in your academic career, you start to feel like you are engaging in genuine scholarly work and can start to tackle larger challenges. Despite the detail of the course material, at postgraduate level further reading and research are vital in order to engage fully with the subject. The range of units available at postgraduate level allows you to focus on and specialise in areas within the subject which fascinate you.”

Rachel Collins shares how her MSc Marketing degree has helped her with her business:

“The tutors on my particular course were all incredibly knowledgeable and experienced in their respective fields, and really worked to tailor the course material to the students' interests. Going into the course I had the intention of applying what I learned to the development of my company, and this presented an opportunity for real-world application of techniques and strategies learned from the very beginning. Our tutors took the time to get to know us individually and use examples and case studies geared towards our areas of interest – this along with the modules containing live briefs really gave an accurate impression of what it would be like to work in the field of marketing.”

Clive Thomas was a mature student studying MSc Project Management full-time, while working as Commercial Planning Manager at Manor Marine. His advice to other mature students considering postgraduate study:

“Don't hold back. You are never too old. Consider the study workload, consider your work/life balance, and what you think you might get from the course. I did the course over one year, but some of my contemporaries did it over two years, pick what suits you best. If you put in the effort, you'll be greatly rewarded. Don't think it's easy, it's not, but well worth it, I ended up with a distinction!

For me, it cost me time, money and effort – nonetheless, I'm glad that I have done it. Having completed the MSc I found a much better grasp on my skills, giving me greater capabilities within the office and, probably more importantly, it has given me a new confidence and peace in my abilities. So, if you are considering going to Solent University, talk to the lecturers, as I did, and then I expect you'll never look back. Good luck!”



Southampton
is home to over
30,000 students



Five city
centre parks



Westquay is home
to over **90** shops
and **50** places to eat



180+ pubs, bars
and nightclubs



SOUTHAMPTON OUR GREAT CITY

Southampton is the perfect city to study your postgraduate qualification in, besides offering great industry networks across our key subject areas, there's also lots on offer to help you unwind.

The Solent campus is located next to one of the city's many parks and leads to the Cultural Quarter where you'll find a variety of restaurants and bars, as well as some of the city's art galleries and museums. Within a ten-minute walk from the campus you can reach Westquay, the main shopping centre, the multiplex Showcase cinema, Southampton's medieval walls, Mayflower theatre and St Mary's stadium, home to Southampton Football Club.

London is easily accessible by train and road, and the city also has its own international airport. If you want to explore locally, the New Forest National Park is right on our doorstep and on the National Cycle Network; the Isle of Wight is also easily accessible through regular ferry services. We don't think you'll be able to explore it all in a year, but you should definitely give it a go.



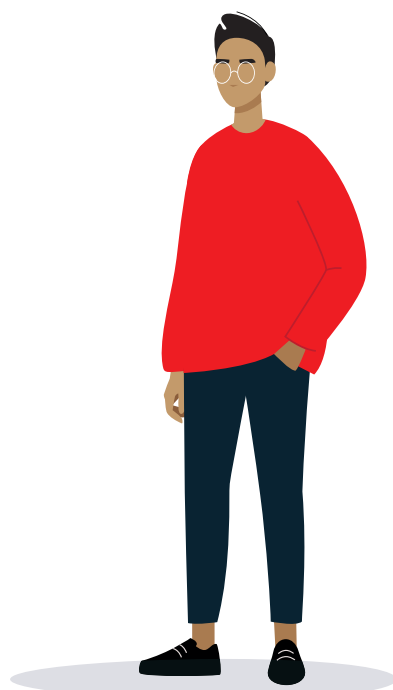
POSTGRADUATE COURSES

OUR COURSES INCLUDE:

- MSc Applied Artificial Intelligence and Data Science**
- MSc Architectural Project Management
- MSc Clinical Exercise Science
- LLM Commercial Law and Professional Legal Practice
- MSc Computer Engineering**
- MA Creative Direction for Fashion and Beauty
- MSc Cyber Security Engineering
- MSc Digital Design
- MA Film Production
- MSci Football Science
- Global MBA**
- LLM Intellectual Property Law and Professional Legal Practice
- MSc International Maritime Business
- MSc International Shipping and Logistics
- LLM International Trade and Maritime Law
- Postgraduate Diploma in International Trade and Maritime Law
- MA Make-up and Hair Design Futures
- MSc Marketing
- MA Physical Education and School Sport
- MA Post Production in Film and Television
- MSc Project Management**
- MRes Psychology
- MA Public Relations and Multimedia Communications
- MSc Shipping Operations
- MA Sport Management
- MSc Sport Science and Performance Coaching
- MA Sports Broadcast Journalism
- MSc Superyacht Design
- MSc Sustainable Building Design
- MA Visual Communication

**January starts available

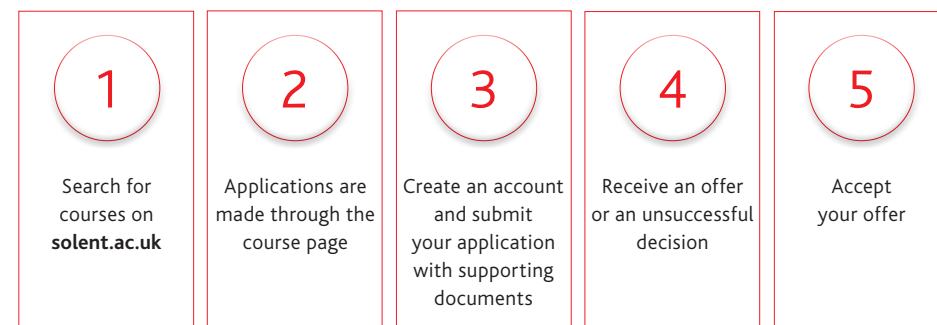
For an up-to-date list, visit
www.solent.ac.uk/postgrad



RESEARCH DEGREES

We also offer the opportunity to study for a Master of Philosophy (MPhil) or Doctor of Philosophy (PhD) in three distinctive areas:
Creative and cultural industries
Maritime and the environment
Health and wellbeing

HOW TO APPLY



APPLICATION PROCESS

Applying for a postgraduate course at Solent is straightforward, just visit the course page of the course you're interested in studying – and follow the Apply online link. Your application comes directly to the University.

APPLICATION TIPS

- Do your research – make sure the course is right for you.
- Check important dates, start dates and any visa deadlines, if applicable.
- Plan and prepare your application and make sure you have the correct documents.
- Once you've applied, make sure your contact details are kept up to date.
- Make any relevant copies required.
- Keep in touch and look out for emails from us.



FEES AND FINANCE

COURSE FEES

Tuition fees vary by course, and whether you are a UK or international student. Up-to-date information can be found by visiting the course page at www.solent.ac.uk/courses

As well as paying for your tuition fees, you should also consider budgeting for other expenses such as accommodation, bills, food, living expenses, travel and, of course, a social life.



FINANCING YOUR STUDIES

There are several options available to help support you with the tuition fees, including a postgraduate loan, scholarships and Solent's alumni discount scheme.

POSTGRADUATE LOAN

The postgraduate loan is available to UK students from Student Finance England. For 2021 entry, students can apply for up to £11,570. The money is paid directly to the student who can then decide how to spend it. Note that course fees may be lower than the loan, so you can use the excess for living expenses if required. You will pay the loan back once you are earning over a certain amount (for 2021 this was £21,000).

Terms and conditions apply to the loan, visit www.gov.uk/masters-loan to see if you are eligible.

SCHOLARSHIPS

Solent offer a variety of scholarships – based on academic or sporting merit – for UK and international students, as well as a selection of bursaries to support you with any specific circumstances. Further information on these can be found on our postgraduate funding pages www.solent.ac.uk/scholarships

ALUMNI DISCOUNT

Solent alumni could be eligible for up to a 50% reduction of tuition fees if returning to study a postgraduate course. The discount applied will be dependent on your undergraduate degree classification. Solent alumni with a First (1.1) will be offered a 50% discount. Solent alumni with a 2.1 or 2.2 will be offered a 20% discount.

GET READY FOR A CLOSER LOOK

Our postgraduate open days offer the perfect opportunity to find out more about what studying at Solent is really like. During the event you'll have the chance to hear from our highly experienced academics who will take you through our courses in detail and answer any questions you may have. You can also find out more about postgraduate finance, careers and learning support, the student experience and accommodation options.

OPEN DAYS

Wednesday 8 December 2021, 12–2pm (Virtual)
Wednesday 23 February 2022, 12–2pm (Virtual)
Wednesday 27 April 2022, 12–2pm (On campus)
Wednesday 24 August 2022, 12–2pm (Virtual)

To book your place visit
www.solent.ac.uk/opendays

WORKSHOPS

Throughout the year we also hold a variety of information weeks and workshops, designed to give you the most up to date information on postgraduate study.

Postgraduate application guide

Wednesday 16 March 2022, 12pm

Postgraduate finance

Wednesday 18 May 2022, 12pm

Postgraduate information week

(Including course masterclasses)
27 June–1 July 2022

Book now, visit www.solent.ac.uk/postgrad



FIND OUT MORE

Join us online for one of our postgraduate open days or workshops.
To book your place visit www.solent.ac.uk/opendays



-  solentuniversity
-  @solentuni
-  @solentuniversity
-  solentuni
-  school/solentuni

Solent University
East Park Terrace
Southampton
SO14 0YN

T. +44 (0)23 8201 3000
E. ask@solent.ac.uk

www.solent.ac.uk